

**80** mg/ml

Concentration



## **Gentasol** 80 mg/ml

Gentamicin in injectable solution



### **Treatment of infections in cattle**

- ✓ Chronic and severe infections of the respiratory tract
- ✓ For cows with metritis and endometritis
- ✓ For digestive infections due to *E. coli* and *Salmonella*

### **Excellent absorption and fast- acting**

- ✓ Reaches maximum concentration in 30-60 minutes

### **The best valued injectable gentamicin in the Spanish market**

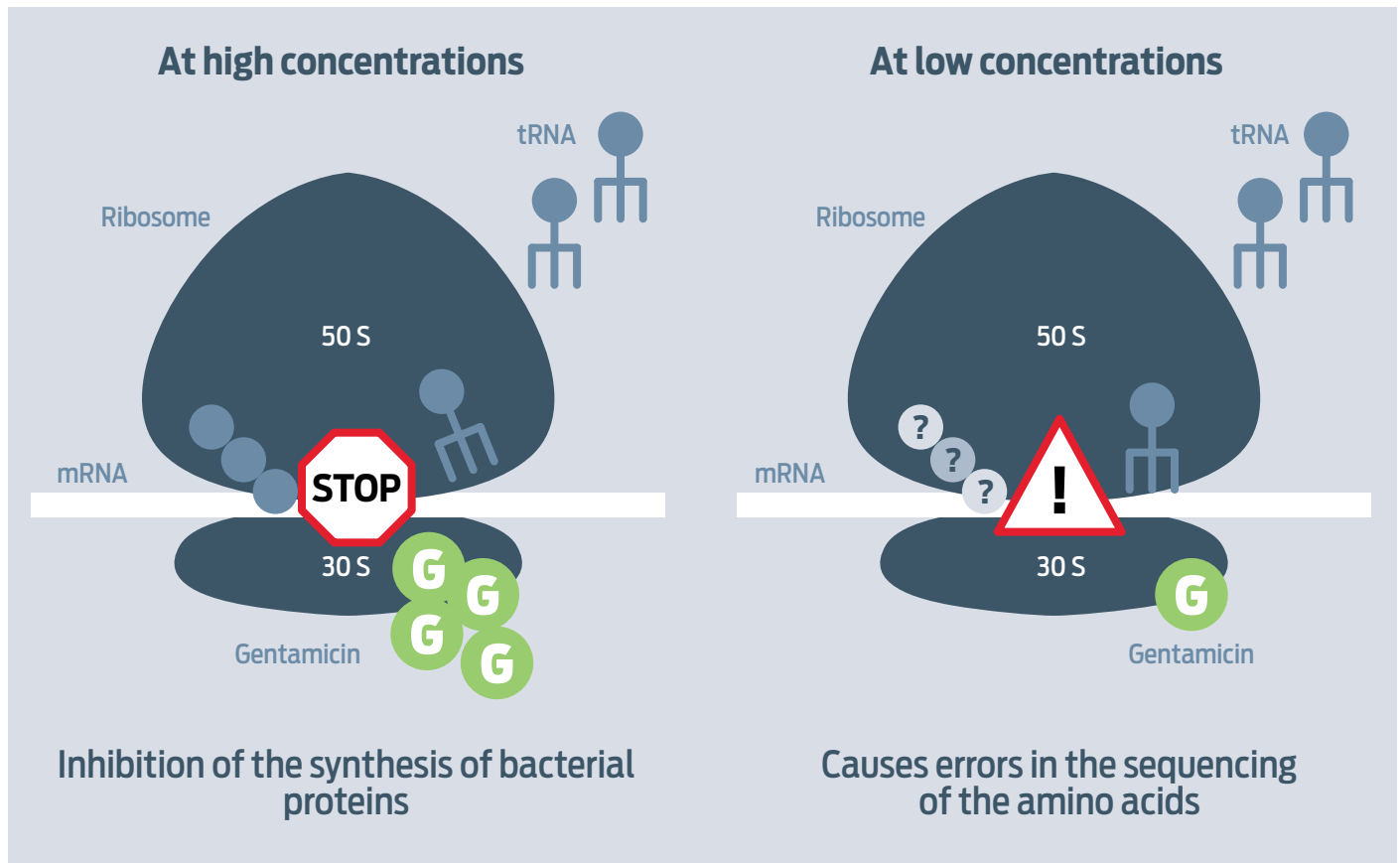
- ✓ Endorsed by our customers for its high quality

**LABIANA**  
*always works*

# **Gentadol** 80 mg/ml **Gentamicin in injectable solution**



## Mechanism of action of gentamicin



### COMPOSITION PER ML

Gentamicin (sulfate) ..... 80 mg

### INDICATIONS

Treatment of infections caused by microorganisms sensitive to gentamicin.

#### Calves (of up to 250 kg):

- Colibacillosis and salmonellosis.
- Genitourinary infections.
- Respiratory infections

### DOSAGE AND ROUTE OF ADMINISTRATION

**Cattle (calves of up to 250 kg):** 2.5-6.2 ml/100 kg l.w. every 8-12 hours, for 3 consecutive days by IM or slow IV route.

Respect a maximum volume per injection point of 20 ml.

### WITHDRAWAL PERIOD

**Calves:**

**Meat:** 214 days.

**Milk:** Do not administer to lactating females producing milk for human consumption.

### CONTRAINDICATIONS

- Do not use in known cases of kidney dysfunction.
- Do not use in case of hypersensitivity to the active substance or to any excipient.
- Do not exceed the recommended dosage.
- Do not use during pregnancy.
- Do not use in dehydrated animals or with hearing alteration (loss of balance or inner ear damaged)
- Use of gentamicin on foals and neonates is not recommended.

### PRESENTATIONS

100 and 250 ml vials.

Registry no. 638 ESP

*Medication subject to veterinary prescription.*

*Administration under control or supervision of the veterinary.*

